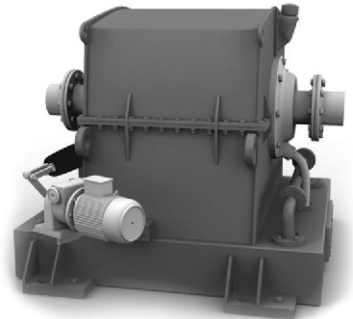


SCOOP CONTROLLED

Scoop Controlled

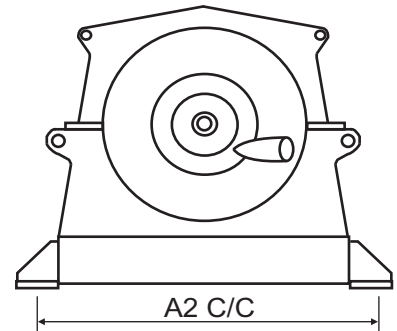
These fluid couplings are housed in self-supported stationary housing providing no load starting of motor, stepless speed variation and continuous declutching. They are compatible with all types of controllers like pneumatic, hydraulic, electronic or manual. Controllers and oil coolers are fitted at the factory to your specifications.

PERFORMANCE DATA



Part No. SC	Max Kw at input speed			Max Speed
	900	1500	3000	
6	9.0	40.0	125.0	3000
7	17.0	75.0	300.0	3000
8	24.0	100.0	500.0	3000
9	44.0	205.0	-	1800
10	85.0	350.0	-	1800
11	172.0	725.0	-	1800
12	304.0	1250.0	-	1800
13	432.0	1700.0	-	1800
14	1468.0	-	-	1200
16	3000.0	-	-	1000

DIMENSIONAL DATA



Part No. SC	B	A1 C / C	A2 C / C	H
SC-6	695.0	295.0	680.0	460
SC-7	855.0	370.0	680.0	460
SC-8	875.0	370.0	915.0	500
SC-9	1015.0	440.0	915.0	500
SC-9	960.0	440.0	915.0	500
SC-10	1135.0	560.0	1075.0	560
SC-11	1260.0	590.0	1340.0	630
SC-12	1267.0	590.0	1340.0	695
SC-13	1540.0	590.0	1340.0	695
SC-13	1540.0	750.0	1650.0	765
SC-14	1640.0	850.0	1800.0	1000
SC-16	2100.0	1140.0	2300.0	1200

