



OLDHAM COUPLING - INCH

RULAND PARADRIVE™ OLDHAM

Oldham couplings are three piece couplings comprised of two aluminium hubs and a center member. The center disc, which is available in a choice of acetal for high torsional stiffness or nylon for vibration and shock absorption, is the torque transmitting element. Torque transmission is accomplished by mating slots in the center disc, located on opposite sides of the disc and oriented 90 degrees apart, with the drive tenons on the hubs. The slots of the disc fit on the tenons of the hub with a slight press fit. This press fit allows the coupling (with an acetal disc) to operate with zero backlash. Coupling can act as a mechanical fuse, contact Naismith Engineering for more information..

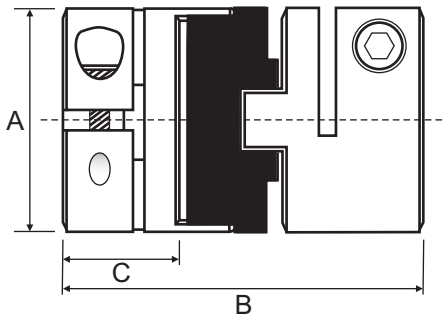
PERFORMANCE DATA



Part No. Clamp	Set Screw	Max Bore	Power at 100 RPM kW	Nominal Torque (Nm)		Normal Maximum Speed (RPM)
				Acetal	Nylon	
	OST08	6.4	0.007	0.68	0.17	4500
OCT12	OST12	7.9	0.024	2.25	0.57	4500
OCT16	OST16	12.7	0.050	4.75	1.13	4500
OCT21	OST21	15.9	0.084	8.00	2.05	4500
OCT26	OST26	19.1	0.154	14.75	3.65	4500
OCT32		25.4	0.298	28.50	-	4500
OCT36		25.4	0.445	42.50	-	4500

Power at 100 RPM rating is based on Acetal.
This coupling is fully suited to carrying torque up to this rating.

DIMENSIONAL DATA



Part No. Clamp	Set Screw	Bore		A	B OCT	B OST	C OCT	C OST
		Min	Max					
	OST08	3.2	6.4	12.7	-	15.7	-	5.6
OCT12	OST12	4.8	7.9	19.1	25.4	22.2	9.7	7.6
OCT16	OST16	6.4	12.7	25.4	31.8	28.6	11.9	9.9
OCT21	OST21	7.9	15.9	33.3	47.6	47.6	15.0	15.0
OCT26	OST26	9.5	19.1	41.3	50.8	50.8	18.0	18.0
OCT32		12.7	25.4	50.8	59.7	-	20.8	-
OCT36		12.7	25.4	57.2	78.7	-	28.7	-