

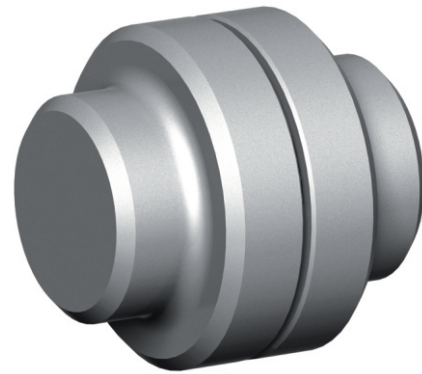
## FLEXOMAX G COUPLING

### FLEXOMAX G

The Flexomax G coupling has a very distinctive element that weaves in and out between the jaws. This element has a high internal damping characteristic, which enables the coupling, to limit the torsional oscillation and thus protect the machine from damage. Elements come in nitrile rubber (NBR) and hardness of 85 shore A with temperature range of -40°C to +120°C.

### PERFORMANCE DATA

Part No.	Max Bore	Power at 1000 RPM kW	Nominal Torque (Nm)	Normal Maximum Speed (RPM)	
				E Hub	G Hub
G050	22.0	0.215	20.5	12500	-
G067	32.0	0.398	38.0	10000	-
G082	38.0	0.848	81.0	8000	8000
G097	48.0	1.780	170.0	7000	7000
G112	55.0	2.827	270.0	6000	6000
G128	65.0	4.529	432.5	5000	5000
G148	80.0	7.068	675.0	4500	4500
G168	90.0	11.780	1125.0	4000	4000
G194	105.0	18.848	1800.0	3500	3500
G214	115.0	28.272	2700.0	3000	3000
G240	125.0	45.236	4320.0	2750	2750
G265	130.0	70.681	6750.0	2500	2500
G295	140.0	94.241	9000.0	2250	2250
G330	170.0	122.513	11700.0	2000	2000
G370	195.0	171.518	16380.0	1750	1750
G415	215.0	254.450	24300.0	1500	1500
G480	230.0	339.267	32400.0	1400	1400
G575	250.0	508.901	48600.0	1200	1200



E Hub Standard  
G Hub with Flange also available

### DIMENSIONAL DATA

Part No.	Bore		A	B	C	D	E
	Min	Max					
G050	-	22.0	50.0	52.0	25.0	33.0	2.0
G067	-	32.0	67.0	62.5	30.0	46.0	2.5
G082	-	38.0	82.0	83.0	40.0	53.0	3.0
G097	-	48.0	97.0	103.0	50.0	68.0	3.0
G112	-	55.0	112.0	123.5	60.0	79.0	3.5
G128	-	65.0	128.0	143.5	70.0	90.0	3.5
G148	-	80.0	148.0	163.5	80.0	107.0	3.5
G168	-	90.0	168.0	183.5	90.0	124.0	3.5
G194	-	105.0	194.0	203.5	100.0	140.0	3.5
G214	-	115.0	214.0	224.0	110.0	157.0	4.0
G240	-	125.0	240.0	244.0	120.0	179.0	4.0
G265	44	130.0	265.0	285.5	140.0	198.0	5.5
G295	50	140.0	295.0	308.0	150.0	214.0	8.0
G330	56	170.0	330.0	328.0	160.0	248.0	8.0
G370	63	195.0	370.0	368.0	180.0	278.0	8.0
G415	69	215.0	415.0	408.0	200.0	315.0	8.0
G480	103	230.0	480.0	448.0	220.0	350.0	8.0
G575	116	250.0	575.0	488.0	240.0	380.0	8.0

