

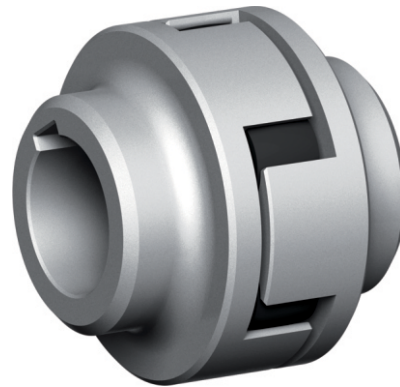
FLEXOMAX GSN COUPLING

FLEXOMAX GSN

The Flexomax GSN coupling is a torsionally flexible, shock-proof jaw coupling which compensates angular, radial & axial shaft misalignment within specified tolerances. Polyurethane elastomers are oil resistant & withstand temperatures between -30°C to +100°C.

PERFORMANCE DATA

Part No.	Max Bore	Power at 100 RPM kW	Nominal Torque (Nm)	Normal Maximum Speed (RPM)
GSN050	25.0	0.314	30.0	15000
GSN070	35.0	1.257	120.0	11000
GSN085	40.0	2.827	270.0	9000
GSN100	45.0	3.141	300.0	7250
GSN125	56.0	5.864	560.0	6000
GSN145	67.0	9.424	900.0	5250
GSN170	83.0	14.921	1425.0	4500
GSN200	100.0	25.916	2475.0	3750
GSN230	118.0	40.524	3870.0	3250
GSN260	140.0	62.513	5970.0	3000
GSN300	162.0	91.885	8775.0	2500
GSN360	215.0	152.356	14550.0	2150
GSN400	250.0	209.686	20025.0	1900



DIMENSIONAL DATA

Part No.	Bore		A	B	C	D	E
	Min	Max					
GSN050	9	25.0	50.0	75.0	29.5	42.0	12.0
GSN070	10	35.0	70.0	100.0	38.5	55.0	18.0
GSN085	10	40.0	85.0	110.0	43.0	65.0	18.0
GSN100	10	45.0	105.0	125.0	49.0	67.5	20.0
GSN125	13	56.0	126.0	145.0	56.0	84.0	25.0
GSN145	13	67.0	145.0	160.0	60.5	100.0	30.0
GSN170	18	83.0	170.0	190.0	74.5	125.0	30.0
GSN200	20	100.0	200.0	245.0	98.5	150.0	35.0
GSN230	20	118.0	230.0	270.0	110.0	178.0	35.0
GSN260	32	140.0	260.0	285.0	112.5	210.0	45.0
GSN300	32	162.0	300.0	330.0	131.5	243.0	50.0
GSN360	32	215.0	360.0	417.0	172.0	323.0	55.0
GSN400	32	250.0	400.0	440.0	183.5	375.0	55.0

