



## RIGID COUPLING - METRIC

### RULAND NOMAR® RIGID COUPLING

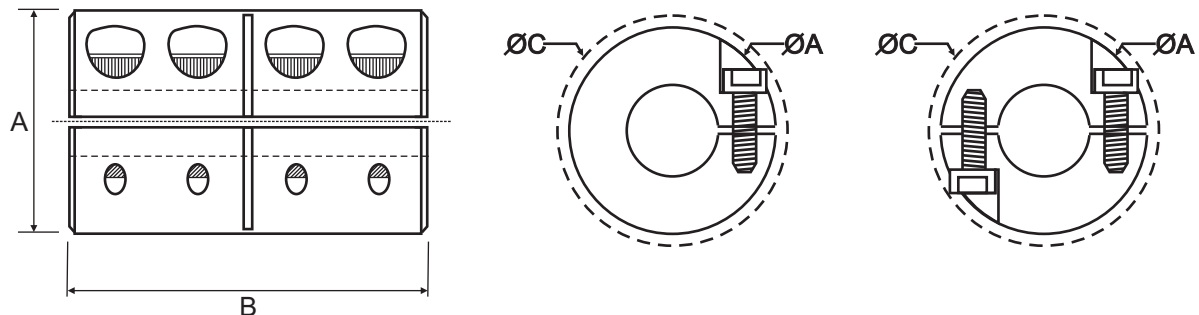
### DIMENSIONAL DATA

Ruland's rigid couplings are available in one and two piece clamp designs, with and without keyways in steel or stainless steel. Clamp style rigid couplings wrap around the shaft, providing high torsional holding power without the shaft damage and fretting that occurs when set screw style couplings are used. Two-piece clamp styles also allow for disassembly and maintenance without removal of other machine components and feature opposing hardware for a balanced design.

Part No.		Bore	A	B	C
One Piece Split	Two Piece Split				
MCLX-3-3	MSPX-3-3	3.0	15.0	22.0	15.0
MCLX-4-4	MSPX-4-4	4.0	15.0	22.0	15.0
MCLX-5-5	MSPX-5-5	5.0	15.0	22.0	15.0
MCLX-6-6	MSPX-6-6	6.0	18.0	30.0	21.5
MCLX-8-8	MSPX-8-8	8.0	24.0	35.0	27.1
MCLX-10-10	MSPX-10-10	10.0	29.0	45.0	33.0
MCLX-12-12	MSPX-12-12	12.0	29.0	45.0	33.0
MCLX-14-14	MSPX-14-14	14.0	34.0	50.0	39.4
MCLX-15-15	MSPX-15-15	15.0	34.0	50.0	39.4
MCLX-16-16	MSPX-16-16	16.0	34.0	50.0	39.4
MCLX-20-20	MSPX-20-20	20.0	42.0	65.0	48.9
MCLX-25-25	MSPX-25-25	25.0	45.0	75.0	51.5
MCLX-30-30	MSPX-30-30	30.0	53.0	83.0	58.7
MCLX-35-35	MSPX-35-35	35.0	67.0	95.0	74.7
MCLX-40-40	MSPX-40-40	40.0	77.0	108.0	84.0
MCLX-50-50	MSPX-50-50	50.0	85.0	124.0	94.2



Part number with no keyway.  
 F - indicates steel with black oxide  
 SS - indicates stainless steel





## RIGID COUPLING - INCH

### RULAND NOMAR® RIGID

Ruland's rigid couplings are available in one and two piece clamp designs, with and without keyways in steel and stainless steel. Clamp style rigid couplings wrap around the shaft, providing high torsional holding power without the shaft damage and fretting that occurs when set screw style couplings are used. Two-piece clamp styles also allow for disassembly and maintenance without removal of other machine components and feature opposing hardware for a balanced design.

### DIMENSIONAL DATA

Part No.		Bore	A	B	C
One Piece	Two Piece				
CLX-4-4	SPX-4-4	6.4	15.9	25.4	20.7
CLX-6-6	SPX-6-6	9.5	22.2	34.9	26.2
CLX-8-8	SPX-8-8	12.7	28.6	44.5	33.7
CLX-10-10	SPX-10-10	15.9	33.3	50.8	38.5
CLX-12-12	SPX-12-12	19.1	38.1	57.2	46.8
CLX-14-14	SPX-14-14	22.2	41.3	63.5	49.1
CLX-16-16	SPX-16-16	25.4	44.5	76.2	52.0
CLX-18-18	SPX-18-18	28.6	47.6	79.4	55.4
CLX-20-20	SPX-20-20	31.8	52.4	82.6	58.1
CLX-22-22	SPX-22-22	34.9	63.5	92.1	70.4
CLX-24-24	SPX-24-24	38.1	66.7	98.4	73.3
CLX-28-28	SPX-28-28	44.5	79.4	114.3	85.5
CLX-32-32	SPX-32-32	50.8	85.7	123.8	94.4



Bore sizes are in inches

Part number with no keyway.

F - indicates steel with black oxide

SS - indicates stainless steel

