



GRID COUPLING

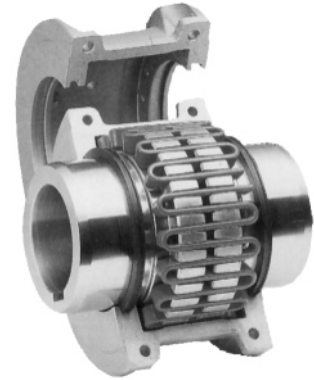
GRID

The Woo Chang Grid Type flexible grid coupling reduces vibration by as much as 30%, and cushions shock loads to safeguard your driving and driven equipment. The flexible nature of the spring like grid absorbs impact energy by spreading it out over time, thus reducing the magnitude of the peak loads. This is possible because of the progressive contact that occurs between the curved profile of the hub teeth and the flexible grid.

Grid couplings are designed for versatility. Common hubs and grids are used within a given size range for both horizontal and vertical split cover models. Grid installation and replacement is a 'snap', making maintenance very easy.

PERFORMANCE DATA

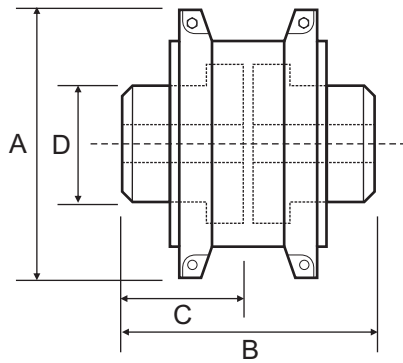
Part No.	Max Bore	Power at 100 RPM kW	Nominal Torque (Nm)	Maximum Speed Horizontal (RPM)	Maximum Speed Vertical (RPM)
1020	28.0	0.545	52	4500	6000
1030	35.0	1.560	149	4500	6000
1040	43.0	2.607	249	4500	6000
1050	50.0	4.555	435	4500	6000
1060	56.0	7.162	684	4350	6000
1070	67.0	10.408	994	4125	5500
1080	80.0	21.466	2050	3600	4750
1090	95.0	39.058	3730	3600	4000
1100	110.0	65.759	6280	2400	3250
1110	120.0	97.592	9320	2250	3000
1120	140.0	143.455	13700	2025	2700
1130	170.0	208.377	19900	1800	2400
1140	200.0	299.476	28600	1650	2200
1150	215.0	416.754	39800	1500	2000
1160	240.0	585.340	55900	1350	1750
1170	280.0	781.152	74600	1225	1600
1180	300.0	1078.534	103000	1100	1400
1190	335.0	1434.555	137000	1050	1300
1200	360.0	1774.550	186000	900	1100
1210	390.0	2607.330	249000	820	-
1220	420.0	3518.325	336000	730	-



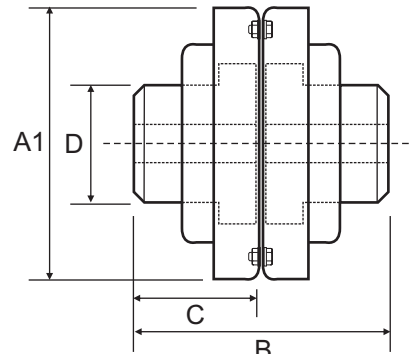


GRID COUPLING

DIMENSIONAL DATA



HORIZONTAL



VERTICAL

Part No.	Bore		A	A1	B	C	D
	Min	Max					
1020	12.7	28.0	101.6	111.1	98.0	47.5	39.7
1030	12.7	35.0	110.0	120.7	98.0	47.5	49.2
1040	12.7	43.0	117.5	128.5	104.6	50.8	57.1
1050	12.7	50.0	138.0	147.6	123.6	60.3	66.7
1060	19.1	56.0	150.5	162.0	130.0	63.5	76.2
1070	19.1	67.0	161.9	173.0	155.4	76.2	87.3
1080	27.0	80.0	194.0	200.0	180.8	88.9	104.8
1090	27.0	95.0	213.0	231.8	199.8	98.4	123.8
1100	41.3	110.0	250.0	266.7	245.7	120.6	142.0
1110	41.3	120.0	270.0	285.8	258.5	127.0	160.3
1120	60.3	140.0	308.0	319.0	304.4	149.2	179.4
1130	66.7	170.0	346.0	377.8	329.8	161.9	217.5
1140	66.7	200.0	384.0	416.0	371.6	182.8	254.0
1150	108.0	215.0	453.1	476.3	371.8	182.9	269.2
1160	120.7	240.0	501.4	533.4	402.2	198.1	304.8
1170	133.4	280.0	566.4	584.2	437.8	215.9	355.6
1180	152.4	300.0	629.9	630.0	483.6	238.8	393.7
1190	152.4	335.0	675.6	685.0	524.2	259.1	436.9
1200	177.8	360.0	756.9	737.0	564.8	279.4	497.8
1210*	178.0	390.0	844.5	-	622.3	304.8	533.4
1220*	203.0	420.0	920.7	-	662.9	325.1	571.5

* available only in horizontal