



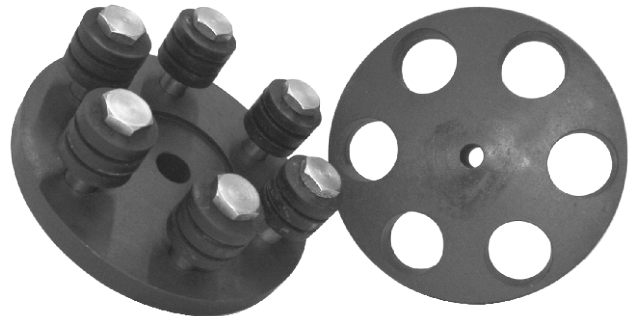
CONE RING TYPE COUPLING

PERFORMANCE DATA

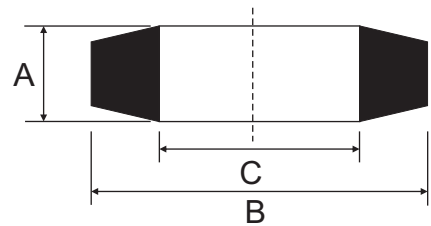
CONE RING TYPE

The Cone Ring type coupling is very popular. Naismith Engineering stock a full range of Cone Ring type couplings in pilot bore and taper bore. Replacement rings are also available. The flexible element consists of tapered rubber rings mounted on steel pins. These rings absorb commonly encountered misalignment, shock and vibration.

Part No.	Max Bore		Power at 100 RPM kW	Nominal Torque (Nm)	Normal Maximum Speed (RPM)
	Pin Hub	Bush Hub			
KX030	38.0	32.0	1.160	111.0	4500
KX038	42.0	38.0	1.850	177.0	4300
KX042	48.0	42.0	2.820	269.0	3900
KX048	55.0	48.0	4.890	467.0	3300
KX058	65.0	58.0	7.550	721.0	2900
KX070	75.0	70.0	10.720	1024.0	2600
KX075	80.0	75.0	25.680	2452.0	2200
KX085	105.0	85.0	35.500	3390.0	2000
KX105	120.0	105.0	53.240	5084.0	1730
KX120	130.0	120.0	88.730	8474.0	1570
KX135	135.0	135.0	120.600	11520.0	1360
KX150	150.0	150.0	158.500	15140.0	1250



DIMENSIONAL DATA



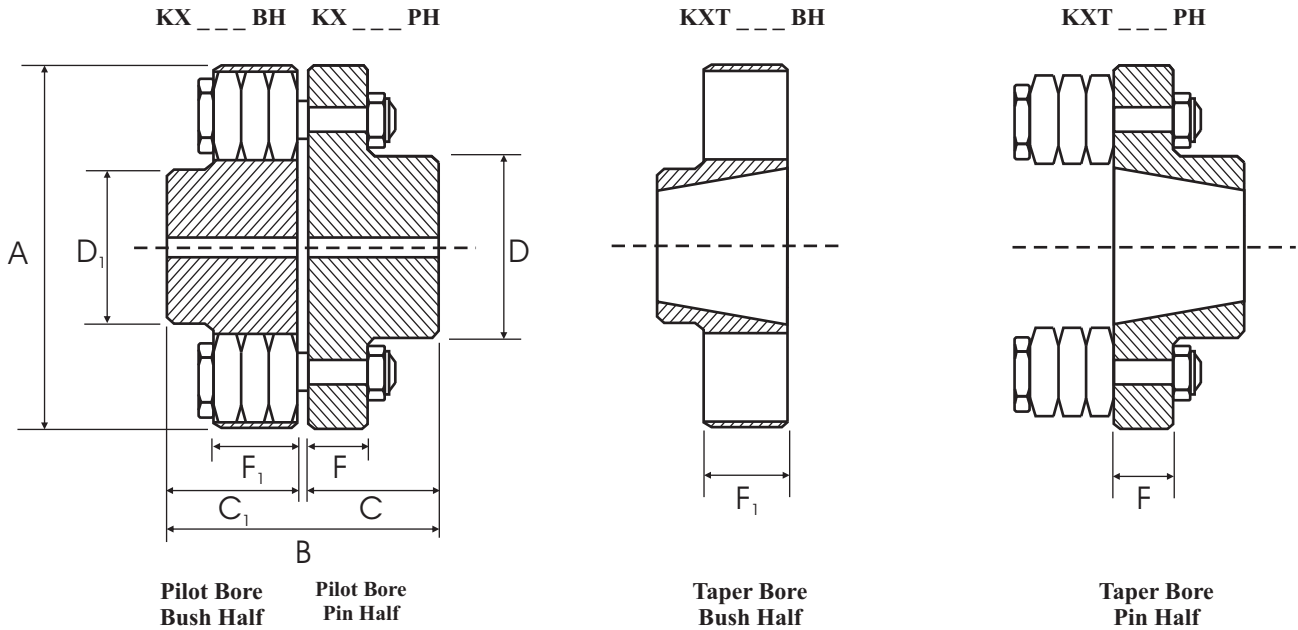
SPARE PARTS

Part No.	Pins		Cone Rings			
	Qty. Per Coupling	Thread	Qty. Per Coupling	A	B	C
KX030	4	M10	12	7.5	28.2	12.7
KX038	6	M10	18	7.5	28.2	12.7
KX042	8	M10	24	7.5	28.2	12.7
KX048	6	M12	18	10.3	37.7	17.5
KX058	8	M12	24	10.3	37.7	17.5
KX070	10	M12	30	10.3	37.7	17.5
KX075	8	M20	32	12.7	50.4	25.0
KX085	10	M20	40	12.7	50.4	25.0
KX105	12	M20	48	12.7	50.4	25.0
KX120	10	M24	40	17.9	63.1	30.2
KX135	12	M24	48	17.9	63.1	30.2
KX150	14	M24	56	17.9	63.1	30.2



CONE RING TYPE COUPLING

DIMENSIONAL DATA



Pin Hub Dimensions

Part No.	Bore		Taper Bush Pin	A	B		C	D Pin	F Pin
	Min	Max			Pilot	Taper			
KX030	12.0	38.0	-	127.0	85.0	-	41.0	64.0	12.0
KX038	15.0	42.0	-	132.0	99.0	-	48.0	72.0	12.0
KX042	15.0	48.0	1215	146.0	115.0	44.1	56.0	83.0	12.0
KX048	21.0	55.0	1615	171.0	125.0	44.1	61.0	90.0	17.0
KX058	21.0	65.0	2017	193.0	139.0	37.8	68.0	106.0	17.0
KX070	28.0	75.0	2525	216.0	155.0	70.5	76.0	128.0	17.0
KX075	28.0	80.0	2525	254.0	179.0	-	88.0	145.0	30.0
KX085	28.0	105.0	3030	279.0	203.0	83.2	100.0	166.0	30.0
KX105	34.0	120.0	3535	330.0	237.0	95.9	117.0	202.0	30.0
KX120	61.0	130.0	4040	370.0	270.0	115.6	132.0	232.0	46.0
KX135	67.0	135.0	4545	419.0	300.0	125.3	147.0	240.0	46.0
KX150	82.0	150.0	5050	457.0	336.0	138.0	165.0	260.0	46.0

Bush Hub Dimensions

Part No.	Bore		Taper Bush Bush	A	B		C ₁	D ₁ Bush	F ₁ Bush
	Min	Max			Pilot	Taper			
KX030	12.0	32.0	-	127.0	85.0	-	41.0	58.0	26.0
KX038	15.0	38.0	-	132.0	99.0	-	48.0	64.0	26.0
KX042	15.0	42.0	1215	146.0	115.0	44.1	56.0	78.0	26.0
KX048	21.0	48.0	1615	171.0	125.0	44.1	61.0	82.0	33.0
KX058	21.0	58.0	2017	193.0	139.0	37.8	68.0	98.0	33.0
KX070	28.0	70.0	2525	216.0	155.0	70.5	76.0	117.0	33.0
KX075	28.0	75.0	2525	254.0	179.0	-	88.0	130.0	56.0
KX085	28.0	85.0	3030	279.0	203.0	83.2	100.0	148.0	56.0
KX105	34.0	105.0	3535	330.0	237.0	95.9	117.0	180.0	56.0
KX120	61.0	120.0	4040	370.0	270.0	115.6	132.0	206.0	76.0
KX135	67.0	135.0	4545	419.0	300.0	125.3	147.0	230.0	76.0
KX150	82.0	150.0	5050	457.0	336.0	138.0	165.0	256.0	76.0

Only available with taperlock entry from flange side.