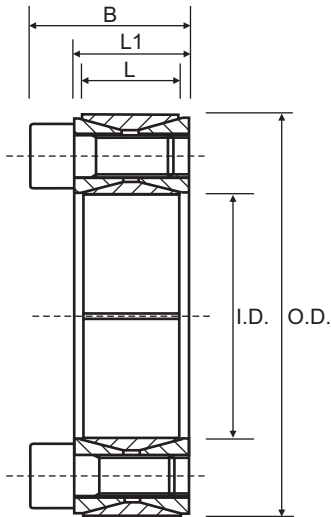


Characteristics
 Medium-high torque
 Wide tolerances
 Easy dismantling



Torque = Maximum transmittable torque when axial force is zero.
Axial Force = Maximum axial force when transmittable torque is zero.

When using more than one CAL1 unit, the total transmittable torque is as follows:

- 1 unit: Torque = Torque in table
- 2 unit: Torque = Torque in table X 1.9
- 3 unit: Torque = Torque in table X 2.7

For CAL1 use the following tolerances
 h11 for the shaft
 H11 for the hub

CAL1 (Not Self-Centering)

Cone clamping unit consists of four pieces with two inside double-cone rings joined through a set of tightening screws. It is recommended for medium to high torques and although it is not self-centering, it can be easily assembled and disassembled. Available for shaft diameters from 20 to 900 mm.

Part No.	I.D.	O.D.	L	L1	B	Torque Nm	Axial Force N
CAL1-20/47	20	47	17	20	26	288	29000
CAL1-22/47	22	47	17	20	26	317	29000
CAL1-24/50	24	50	17	20	26	345	29000
CAL1-25/50	25	50	17	20	26	360	29000
CAL1-28/55	28	55	17	20	26	498	36000
CAL1-30/55	30	55	17	20	26	533	36000
CAL1-32/60	32	60	17	20	26	676	42000
CAL1-35/60	35	60	17	20	26	739	42000
CAL1-38/65	38	65	17	20	26	928	49000
CAL1-40/65	40	65	17	20	26	977	49000
CAL1-42/75	42	75	20	24	32	1587	76000
CAL1-45/75	45	75	20	24	32	1701	76000
CAL1-48/80	48	80	20	24	32	1814	76000
CAL1-50/80	50	80	20	24	32	1889	76000
CAL1-55/85	55	85	20	24	32	2397	87000
CAL1-60/90	60	90	20	24	32	2615	87000
CAL1-65/95	65	95	20	24	32	3204	99000
CAL1-70/110	70	110	24	28	38	4589	131000
CAL1-75/115	75	115	24	28	38	4917	131000
CAL1-80/120	80	120	24	28	38	5245	131000
CAL1-85/125	85	125	24	28	38	6290	148000
CAL1-90/130	90	130	24	28	38	6600	148000
CAL1-95/135	95	135	24	28	38	7819	165000
CAL1-100/145	100	145	26	33	45	9703	194000
CAL1-110/155	110	155	26	33	45	10673	194000
CAL1-120/165	120	165	26	33	45	13262	221000
CAL1-130/180	130	180	34	38	50	17850	275000
CAL1-140/190	140	190	34	38	50	21089	301000
CAL1-150/200	150	200	34	38	50	24586	328000
CAL1-160/210	160	210	34	38	50	28343	354000
CAL1-170/225	170	225	38	44	58	33541	395000
CAL1-180/235	180	235	38	44	58	38636	429000
CAL1-190/250	190	250	46	52	66	47337	498000
CAL1-200/260	200	260	46	52	66	53261	533000
CAL1-220/285	220	285	50	56	72	68790	625000
CAL1-240/305	240	305	50	56	72	86127	718000
CAL1-260/325	260	325	50	56	72	105229	809000
CAL1-280/355	280	355	60	66	84	128456	918000
CAL1-300/375	300	375	60	66	84	154066	1027000

Sizes up to CAL1-900/1010 available on request
 All dimensions in mm unless otherwise stated

Locking Bush Conversion Chart

SIT (CAL)	TOLLOK (TLK)	Lovejoy (SLD)	MAV	RINGFEDER (RFN)	RINGBLOK	BIKON	COMPOMAC (Conex)	KTR (Clampex)
CAL1	200	1500*	2005	7012	1120	4000	A	100
CAL2	300		3003	8006	1060	5000	C	150
CAL3	110	1900*	5061	7110.1	1100	8000	B*	250
CAL4	450	2600*	4061	7005	1800	1012	F*	400
CAL5A	130		6901	7004	1300.1	7000A	D	200
CAL5B	131		6902	7007	1300.2	7000B	E	201
CAL6	132	1850*	1062	7003	1710	1003	DS	203
CAL7	133	1750*	1061	7006	1720	1006	ES	206
CAL8	134		3061		2400	1506	EP	225
CAL9	250*		3505		1500C	5500SP	H	125
CAL10	500		1004*	7020	1600	9500*	M	700
CAL11S	603	900*	2008	4071	2200.01	1029.71	SD	603
CAL12S	139		4005		1000	4500	L	90
CAL13S	250L		3705		1500	5500S	I	125.1
CAL15	350			7061				

* External diameters and torque ratings may vary between suppliers

