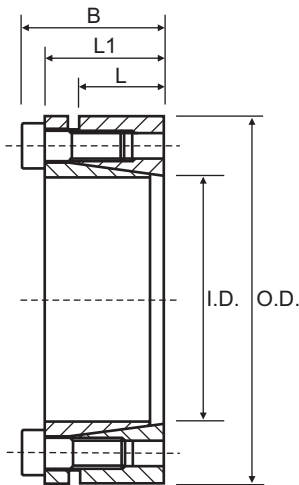


Characteristics
 Medium-high torque
 Economical
 Quick installation



Torque = Maximum transmittable torque when axial force is zero.
Axial Force = Maximum axial force when transmittable torque is zero.

For CAL6 use the following tolerances
 h8 for the shaft
 H8 for the hub

CAL6 (Self-Centering)

Consists of one inside and one outside cone ring, which are joined by a set of screws. It is suitable for medium to high torques and is self-centering. Applications which require a very precise axial positioning are not recommended, owing to a small axial displacement of the hub during the assembly operation. Available for shaft diameters from 18 to 200 mm.

Part No.	I.D.	O.D.	L	L1	B	Torque Nm	Axial Force N
CAL6-18/47*	18	47	17	28	34	330	38000
CAL6-19/47*	19	47	17	28	34	350	38000
CAL6-20/47	20	47	17	28	34	380	38000
CAL6-22/47	22	47	17	28	34	419	38000
CAL6-24/50	24	50	17	28	34	457	38000
CAL6-25/50	25	50	17	28	34	571	46000
CAL6-28/55	28	55	17	28	34	639	46000
CAL6-30/55	30	55	17	28	34	685	46000
CAL6-32/60	32	60	17	28	34	974	61000
CAL6-35/60	35	60	17	28	34	1065	61000
CAL6-38/65	38	65	17	28	34	1157	61000
CAL6-40/65	40	65	17	28	34	1218	61000
CAL6-42/75	42	75	20	34	42	2060	98000
CAL6-45/75	45	75	20	34	42	2207	98000
CAL6-48/80	48	80	20	34	42	2354	98000
CAL6-50/80	50	80	20	34	42	2452	98000
CAL6-55/85	55	85	20	34	42	3082	112000
CAL6-60/90	60	90	20	34	42	3363	112000
CAL6-65/95	65	95	20	34	42	4098	126000
CAL6-70/110	70	110	24	40	50	6240	178000
CAL6-75/115	75	115	24	40	50	6685	178000
CAL6-80/120	80	120	24	40	50	7131	178000
CAL6-85/125	85	125	24	40	50	8524	201000
CAL6-90/130	90	130	24	40	50	9025	201000
CAL6-95/135	95	135	24	40	50	10585	223000
CAL6-100/145	100	145	26	44	56	13045	261000
CAL6-110/155	110	155	26	44	56	14349	261000
CAL6-120/165	120	165	26	44	56	17610	294000
CAL6-130/180	130	180	34	54	66	25437	391000
CAL6-140/190	140	190	34	54	68	28155	402000
CAL6-150/200	150	200	34	54	68	33518	447000
CAL6-160/210	160	210	34	54	68	38327	492000
CAL6-170/225	170	225	44	64	78	45584	536000
CAL6-180/235	180	235	44	64	78	48265	536000
CAL6-190/250	190	250	44	64	78	63683	670000
CAL6-200/260	200	260	44	64	78	67035	670000

* Discontinued size, Limited stock available
 All dimensions in mm unless otherwise stated

Locking Bush Conversion Chart

SIT (CAL)	TOLLOK (TLK)	Lovejoy (SLD)	MAV	RINGFEDER (RFN)	RINGBLOK	BIKON	COMPOMAC (Conex)	KTR (Clampex)
CAL1	200	1500*	2005	7012	1120	4000	A	100
CAL2	300		3003	8006	1060	5000	C	150
CAL3	110	1900*	5061	7110.1	1100	8000	B*	250
CAL4	450	2600*	4061	7005	1800	1012	F*	400
CAL5A	130		6901	7004	1300.1	7000A	D	200
CAL5B	131		6902	7007	1300.2	7000B	E	201
CAL6	132	1850*	1062	7003	1710	1003	DS	203
CAL7	133	1750*	1061	7006	1720	1006	ES	206
CAL8	134		3061		2400	1506	EP	225
CAL9	250*		3505		1500C	5500SP	H	125
CAL10	500		1004*	7020	1600	9500*	M	700
CAL11S	603	900*	2008	4071	2200.01	1029.71	SD	603
CAL12S	139		4005		1000	4500	L	90
CAL13S	250L		3705		1500	5500S	I	125.1
CAL15	350			7061				

* External diameters and torque ratings may vary between suppliers

