



TRASCO 'ES' CURVED JAW COUPLING

CURVED JAW BACKLASH FREE

The main design function of the TRASCO® ES coupling is to transmit motion while absorbing misalignments and vibrations, with absolute precision and without any backlash. A wide range of element including Shore hardness of 80A (Blue), 92A (White/Yellow), 98A (Red), & 64D (Green) are available across the range. Elements are rated for normal operating temperatures up to 90 °C. Most hubs are aluminium and are zero backlash. They are available in standard or clamp type.

The very compact design makes it a very functional coupling ideal for positioning or feedback application.

PERFORMANCE DATA



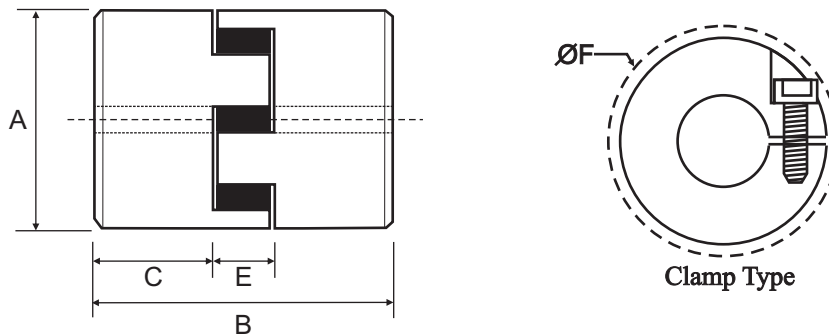
Part No.	Max Bore		Power at 100 RPM kW	Nominal Torque (Nm)				Normal Maximum Speed (RPM)
	Set Screw	Clamp		Shore 80 A	Shore 92 A	Shore 98 A	Shore 65 D	
7	7.0	7.0	0.013	-	1.2	2.0	2.4	40000
9	9.0	9.0	0.031	-	3.0	5.0	6.0	28000
14	16.0	16.0	0.079	-	7.5	12.5	16.0	19000
19/24	24.0	20.0	0.105	5.0	10.0	17.0	21.0	14000
24/28	28.0	28.0	0.366	17.0	35.0	60.0	75.0	10600
28/38	38.0	35.0	0.995	46.0	95.0	160.0	200.0	8500
38/45	45.0	45.0	1.990	-	190.0	325.0	405.0	7100
42	55.0	45.0	2.775	-	265.0	450.0	560.0	6000
48	60.0	60.0	3.246	-	310.0	525.0	655.0	5600

Torque ratings based on Set Screw Style Only.

Power at 100 RPM based on Shore 92 A Set Screw Style.

For torque ratings on Clamp Style please contact Naismith Engineering.

DIMENSIONAL DATA



Part No.	Min Bore		Max Bore		A	B	C	E	F
	Set Screw	Clamp	Set Screw	Clamp					
7	3.0	3.0	7.0	7.0	14.0	22.0	7.0	8.0	15.0
9	4.0	4.0	9.0	9.0	20.0	30.0	10.0	10.0	23.4
14	6.0	6.0	16.0	16.0	30.0	35.0	11.0	13.0	32.2
19/24	6.0	10.0	24.0	20.0	40.0	66.0	25.0	16.0	45.7
24/28	8.0	10.0	28.0	28.0	55.0	78.0	30.0	18.0	56.4
28/38	10.0	14.0	38.0	35.0	65.0	90.0	35.0	20.0	72.6
38/45	12.0	15.0	45.0	45.0	80.0	114.0	45.0	24.0	83.3
42*	14.0		55.0		95.0	126.0	50.0	26.0	-
48*	20.0		60.0		105.0	140.0	56.0	28.0	-

*Not available in Clamp Style